

Finished block size: 12" square (unfinished is 12 ½" square)

Tuxedo is ready for a formal affair. Made either as "white tie" or "black tie," Tuxedo is ready to Wow you. Will you use white or black as your focal fabric? Both look fabulous. The block is a nine-patch which is made up of four flying geese and five solid blocks. It comes together quickly and makes an interesting quilt. What more could you ask?

Fabric

- About a fat eighth of white fabric
- About a fat eighth of black fabric

Cut – White Focus Fabric

- Cut (1) 6 ½" square of the white fabric
- Cut (8) 3 ½" squares of the white fabric
- Cut (4) 3 ½" by 6 ½" rectangles of the black fabric
- Cut (4) 3 ½" squares of the black fabric

OR

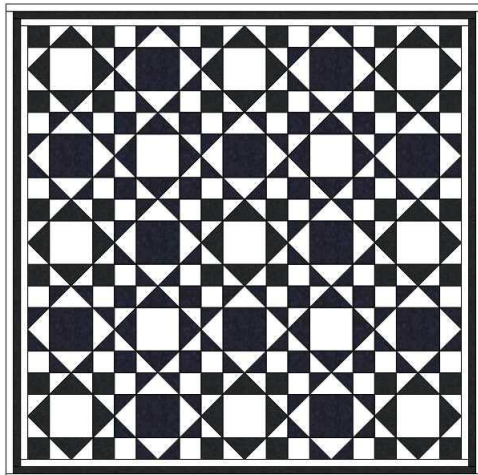
Black Focus Fabric

- Cut (1) 6 ½" square of the black fabric
- Cut (8) 3 ½" squares of the black fabric
- Cut (4) 3 ½" by 6 ½" rectangles of the white fabric
- Cut (4) 3 ½" squares of the white fabric

Sew

1. Make four flying geese units using the 3 ½" by 6 ½" black (white) rectangles and the eight white (black) 3 ½" squares. Draw a line diagonally across the wrong side of all of the white (black) 3 ½" squares. Put a black (white) rectangle down horizontally, right side up. Place a white (black) 3 ½" square on the top left corner, right sides together, with the diagonal line running from top left to bottom right on the square. Sew on the line. Trim the seam to ¼". Press the white (black) into the corner. Place a second white (black) 3 ½" square on the top right corner of the rectangle, right sides together, with the diagonal line running from top right to bottom left of the square. The second square will overlap the first. Sew on the line. Trim the seam to ¼". That makes one flying goose. Make three more in the same manner.
2. Arrange the rows. First row: solid black (white) – flying goose (nose pointing upward) – solid black (white). Second row: Flying goose (nose pointing to the left) – 6 ½" white (black) square – flying goose (nose pointing to the right). Third row: solid black (white) – flying goose (nose pointed downward) – solid black (white).
3. Sew the blocks together in the rows and press the seams to the right on row 1 and row 3 and to the left on row 2. Sew the rows together to finish the block: Press the seams downward.

Sample Quilt Layout



Questions: Email or call Alys Hay (ahayesq@aol.com or 707-837-5946).