

# "Won't You Be My Neighbor?"

## Block of the Month

Think "Spring", Thirty's fabrics or pastels are good. All seams will be a scant  $\frac{1}{4}$ " seam.

Cut your house out first.....

From the Roof print, cut: 1 rectangle  $5\frac{1}{4}$ " x  $12\frac{1}{2}$ "

From the Blue sky print, cut: 2 squares  $5$ " x  $5$ "

From the cream or white window print, cut: 2 squares  $2\frac{1}{4}$ " x  $2\frac{1}{4}$ "

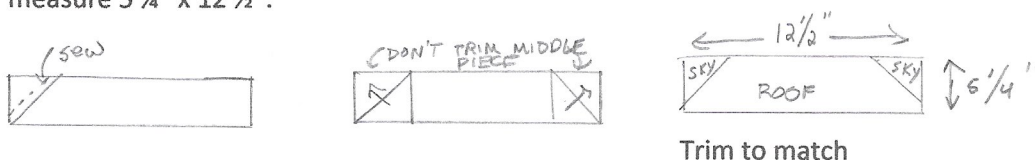
From the house print, cut: 1 rectangle  $2\frac{1}{2}$ " x  $12\frac{1}{2}$ ", 1 rectangle  $2\frac{1}{2}$ " x  $5\frac{1}{2}$ " and 4  $2\frac{1}{4}$ " squares.

From the door print, cut: 1 rectangle  $2\frac{1}{2}$ " x  $4\frac{1}{4}$ "

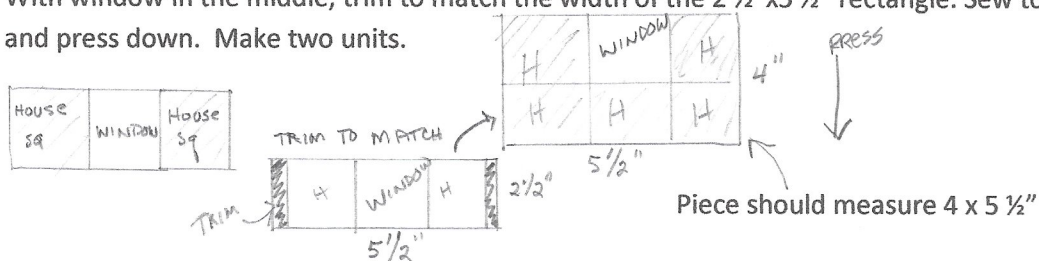
From the green grass print, cut: 1 rectangle  $2\frac{1}{4}$ " x  $12\frac{1}{2}$ "

Sew your house block, Press your seams in the direction of the arrow.

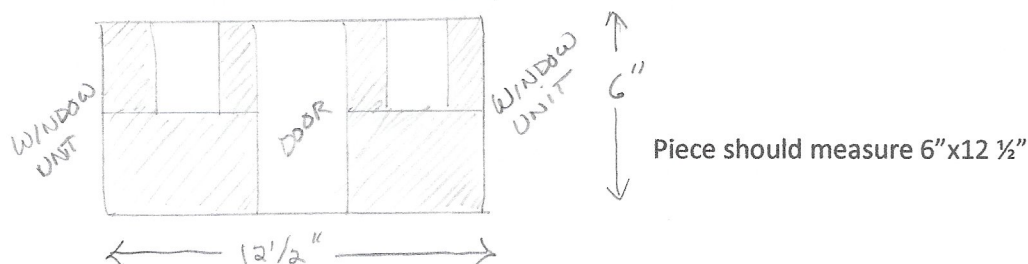
- 1) Place a roof rectangle, PRINT SIDE up, then put a sky square, print side down on top of one corner. Draw a line from corner to corner. Sew about  $\frac{1}{8}$  of an inch on the upper side of the line. That way when you press your corner to corner, it will turn out square. Only cut the middle piece of sky to  $\frac{1}{4}$ ", leave the roof intact for stability. Repeat the other side. This unit should measure  $5\frac{1}{4}$ " x  $12\frac{1}{2}$ ".



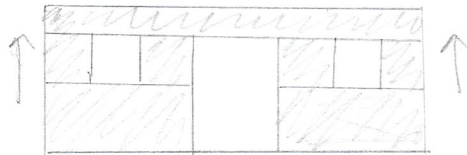
- 2) Sew the  $2\frac{1}{4}$ " window square between the two  $2\frac{1}{4}$ " house squares and press outward. With window in the middle, trim to match the width of the  $2\frac{1}{2}$ " x  $5\frac{1}{2}$ " rectangle. Sew together and press down. Make two units.



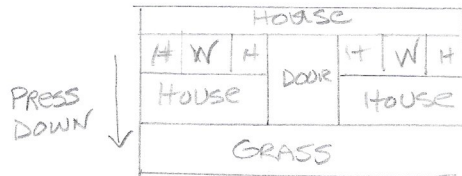
Sew the door in between the two window blocks



Sew house 2 1/2 "x 12 1/2" rectangle on top of the windows and press UP



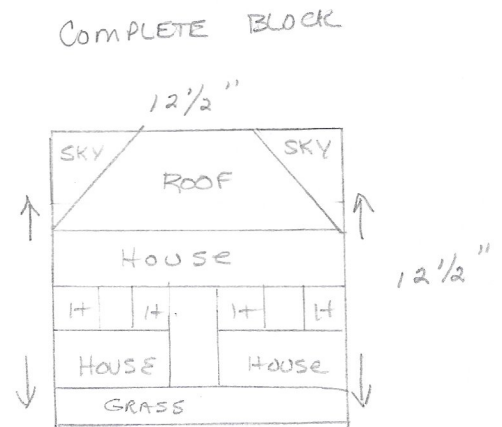
Sew 2 1/4"x12 1/2" green grass rectangle on the bottom. Press seam down.



Sew roof on top and press seam UP.

Decorate your house how you like....Get creative! Have FUN!!

Unfinished block size should be 12 1/2" x 12 1/2".



Heidi Anderson and Carole Behlke